

PRODUKTINFORMATIONEN

Lassen Sie sich 100% kostenfrei
und herstellerunabhängig von uns beraten:



09681 796910



ANFRAGE@4MEDIC.DE



Ihr Kontakt zu uns

09681 796910

info@4medic.de | www.4medic.de
Gerberstraße 11 · 92670 Windischeschenbach

4  m e d i c TM



Versana Premier

Care with Confidence





ELEVATE YOUR DIAGNOSTIC CAPABILITIES WITH **Versana Premier™**

Powerful. Versatile. Productive.
World-class ultrasound designed for peace of mind.

Whether you're working in an imaging center, general practice clinic, family doctor's office or hospital, you can count on Versana Premier, the premium system from the Versana family of ultrasound systems, to reliably produce high-quality images day-after-day, patient-after-patient. This system covers a broad range of clinical exams so you can deliver timely and accurate diagnoses and reports to attending and referring physicians and their patients.

***Abdominal, OB/GYN, Cardiac, Small Parts, Urology,
Vascular, Musculoskeletal, Pediatric***

A PARTNER YOU CAN TRUST

Reach new levels of excellence in diagnostics and reporting

Versana Premier from GE Healthcare, a trusted healthcare partner, is a reliable and easy to use ultrasound system. With advanced capabilities and educational support, our complete solution can meet your practice's needs now and into the future.



World-class image quality supported by the **VisionBoost*** advanced imaging platform



Multi-gesture functionality* enabled by a sensitive touch screen that results in an intuitive, intelligent workflow



Fast acquisition of 3D/4D images* supported by an updated graphics and processing unit



Completely backed by GE Healthcare for both **education and service**



Includes **Whizz clinical features** that save time and simplify workflow



The flexibility to **grow** with your system by purchasing additional software features and probes

*Available on Versana Premier V2.



**WIDE RANGE
OF PROBES**



A COMPLETE SOLUTION

A versatile, intelligently productive ultrasound system that meets your needs

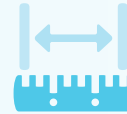
Multiple exam protocols, tools and applications help you diagnose a wide spectrum of patient conditions accurately and efficiently



Make automated **2D Measurements** and **Volume Calculations** in certain applications



Simplify scans with **Productivity Tools** for breast, bladder, and more



Measure intima-media thickness with **Auto-IMT**



Easily compare current and prior exams and track treatment progress with **Follow-Up Tool**



Create custom exam protocols and standardized workflow with **Scan Assistant**



Evaluate vessel flow direction without aliasing using **Power Doppler**



Observe and analyze blood flow for possible vessel-wall irregularities, stenosis and more with **Color Doppler** and **B-Flow™**



Assess thyroid nodules with a **Thyroid Productivity Package** leveraging TI-RADS™ criteria



Automated labeling of the Right Kidney, Gallbladder, and Liver in the RUQ with **Whizz Label***



Enhance or suppress the color flow signal with **Whizz Color Flow***



Shift between Smooth Mode and Sharp Mode to view image features as preferred with **Whizz Easy Style***



Optimize images while scanning with **Whizz Dynamic Image Tuning**



Upload images and reports to the **Tricefy™ Cloud**** or network storage (EMR, PACS) for consultation or sharing with patients



Use well-established **Report Templates** to integrate both measurements and **Anatomy Documentation** seamlessly into reports



Use **Battery Power** to move the system from room to room without powering down



Add **Voice Comments** to exams

*Available on Versana Premier V2.

**Requires internet connection and a Tricefy subscription.

CHECK OUT THESE CONVENIENT FEATURES



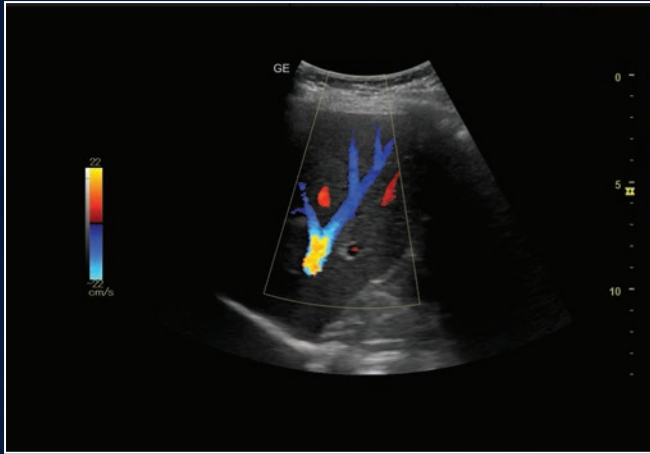
†Optional features which may vary from country to country.

Versana Premier

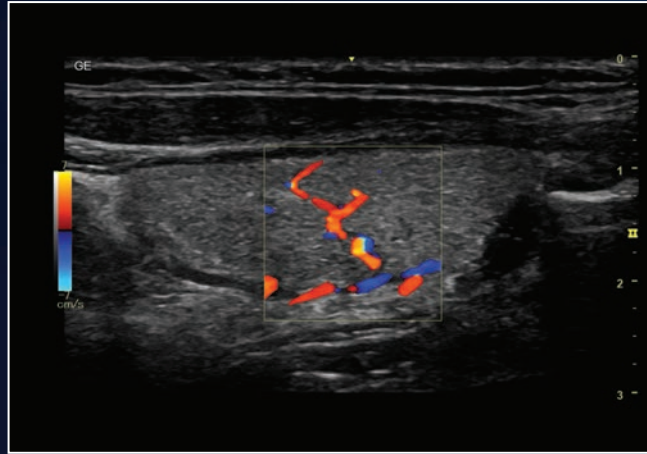
brings broad imaging capabilities and efficient workflow to your practice. Meet your financial goals and grow your practice with this world-class ultrasound system.



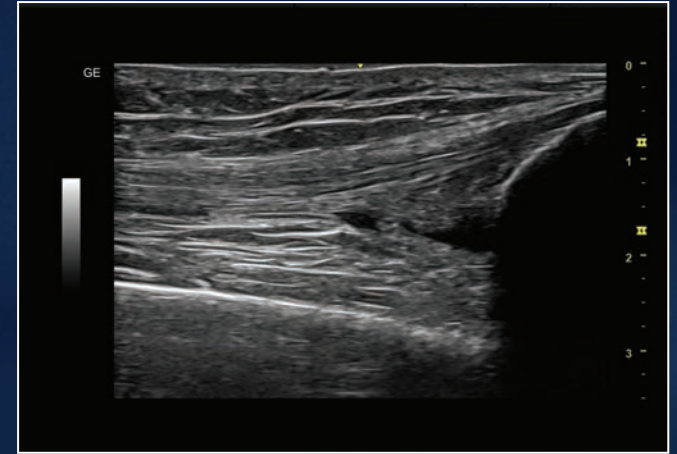
IMAGE GALLERY



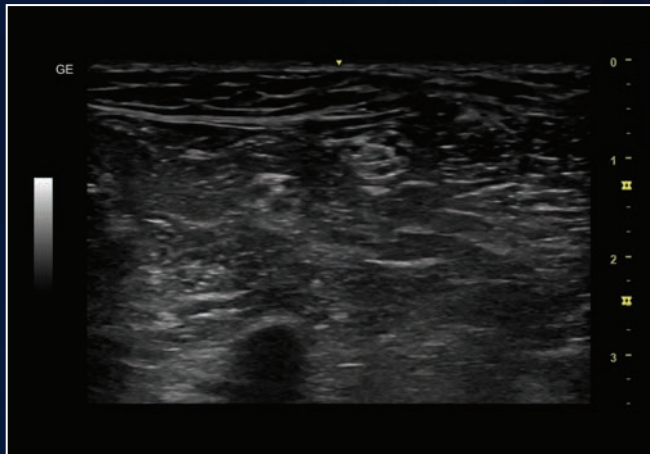
Liver with color Doppler



Thyroid with color Doppler



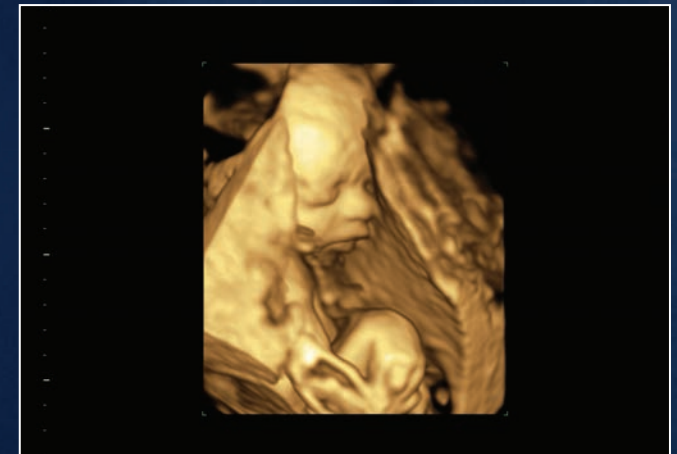
Knee with Whizz Easy Style



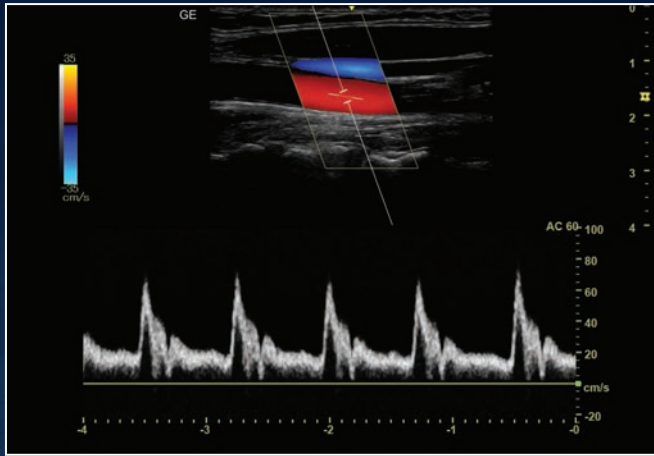
Common peroneal and tibial nerve



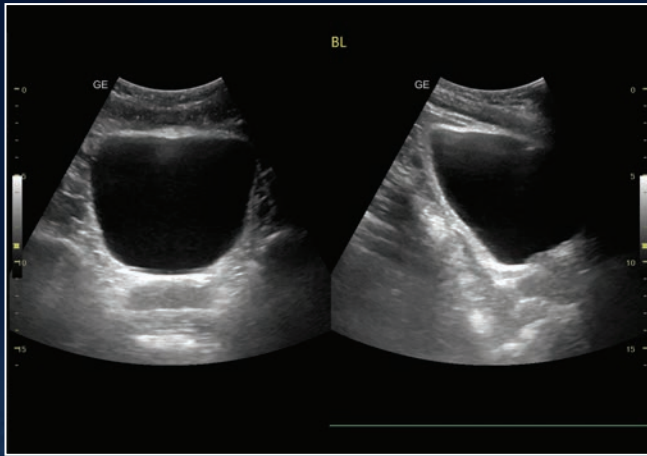
Fetal Profile



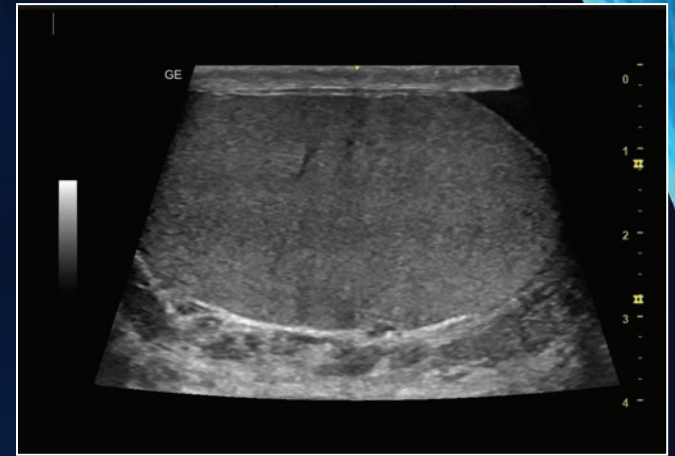
Static 3D imaging with V-Live



Carotid with PW Doppler



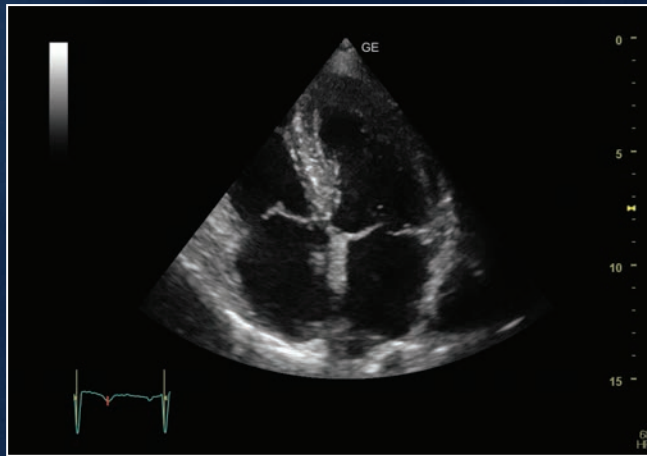
Dual Screen bladder



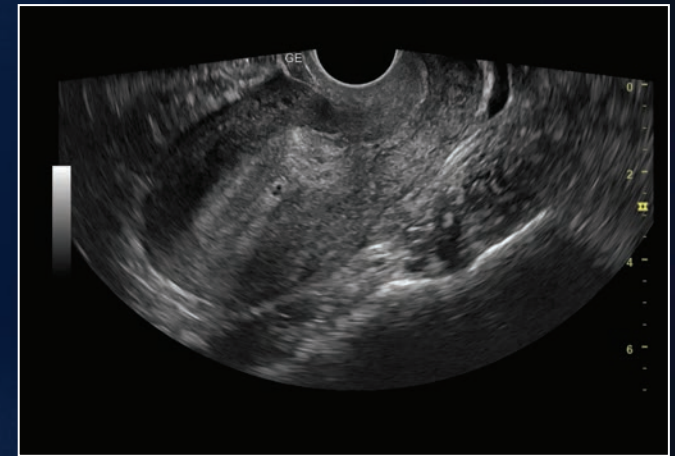
Scrotal imaging



Transperineal needle procedure



Cardiac Apical 4CH



Endocavitary uterine imaging

AN OPPORTUNITY FOR GROWTH

Ultrasound to serve you well today and set your course for the future

Advance your ultrasound skills with Versana Club

No matter your skill level, you can learn to harness the full power of your Versana Premier system with a membership in the Versana Club. The Versana Club offers resources to help you build your skills, network with others and share your ultrasound knowledge. Membership perks include:

- Image-sharing with peers around the world
- Web-based video tutorials and other educational offerings
- Information on Versana service solutions and products
- Articles on ultrasound and patient care

Register now at www.versanaclub.net



Experience the strength of the GE Healthcare family

Your support team is fully trained, GE Healthcare qualified, deeply experienced, and nearby.

- Expert support during and after purchase
- In-depth staff product training
- Remote or on-site technical, clinical and network support

Customized solutions and path to growth

Versana Premier can scale to suit your practice today and grow with you. Select a basic console and software. Then choose from a variety of optional upgrades as your practice advances.

Versana Premier V2 pending 510k clearance in the USA.

++Versana Essential is not available in the USA.

Products mentioned in the material may be subject to government regulation and may not be available in all countries. Shipment and the effective sale can only occur after approval from the regulator. Contact your GE representative for details.

Versana Premier™ Platinum is a configuration name of Versana Premier.

© GE, 2021

GE Healthcare reserves the right to make changes in specifications and features shown herein, or discontinue the product described at any time without notice or obligation. Contact your GE Healthcare representative for the most current information. GE, the GE Monogram, Versana Premier, Versana Essential, Versana Balance, Versana Active and B-Flow are trademarks of GE. TI-RADS is a trademark of the American College of Radiology. Tricefy trademarks are registered trademarks of Trice Imaging, Inc. GE Healthcare, a division of GE.

September 2021 JB04430XE



Versana
Essential™,++

Versana
Premier™
Platinum

Versana
Premier™

Versana
Balance™

Versana
Active™

