

PRODUKTINFORMATIONEN

Lassen Sie sich 100% kostenfrei
und herstellerunabhängig von uns beraten:



09681 796910



ANFRAGE@4MEDIC.DE



Ihr Kontakt zu uns

09681 796910

info@4medic.de | www.4medic.de
Gerberstraße 11 · 92670 Windischeschenbach

4 } m e d i c TM

SonoScape



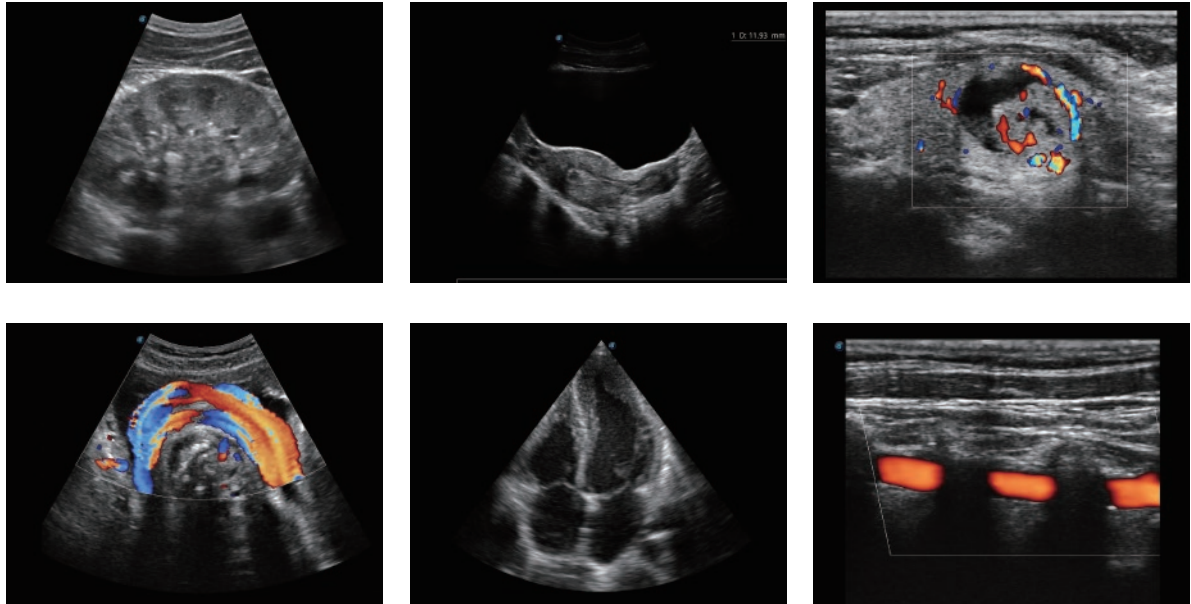
E2

E2 is a color Doppler ultrasound system that reaches beyond your expectations due to its compact and fashionable appearance.

It fulfills GI, OB/GYN, Cardiac and POC applications to fit your routine scanning needs while its color mode will help you for more accurate and efficient diagnosis of lesions.

Comprehensive Solutions

E2 provides a wide range of applications to assist users for routine scanning.



Your Intelligent Color Doppler

Auto Image Optimization

With the press of a button the image is automatically adjusted and optimized, saving you time with parameter adjustments. Additionally, with Auto Focus on, the focus area follows the depth of the ROI box as it is moved in the scanning field, providing users a excellent image quality in the desired area of interested.

Automated Calculation

E2 provides automatic calculations to enhance your diagnostic confidence and save you time for patient communication.

- Auto IMT is used when determining the level of vascular sclerosis present in the patient by automatically tracing the thickness of the carotid vessels.
- Auto Trace provides users with sensitive and accurate wave tracing, avoiding errors from manual trace and giving out calculation results in no time.