

PRODUKTINFORMATIONEN

Lassen Sie sich 100% kostenfrei
und herstellerunabhängig von uns beraten:



09681 796910



ANFRAGE@4MEDIC.DE



Ihr Kontakt zu uns

09681 796910

info@4medic.de | www.4medic.de
Gerberstraße 11 · 92670 Windischeschenbach

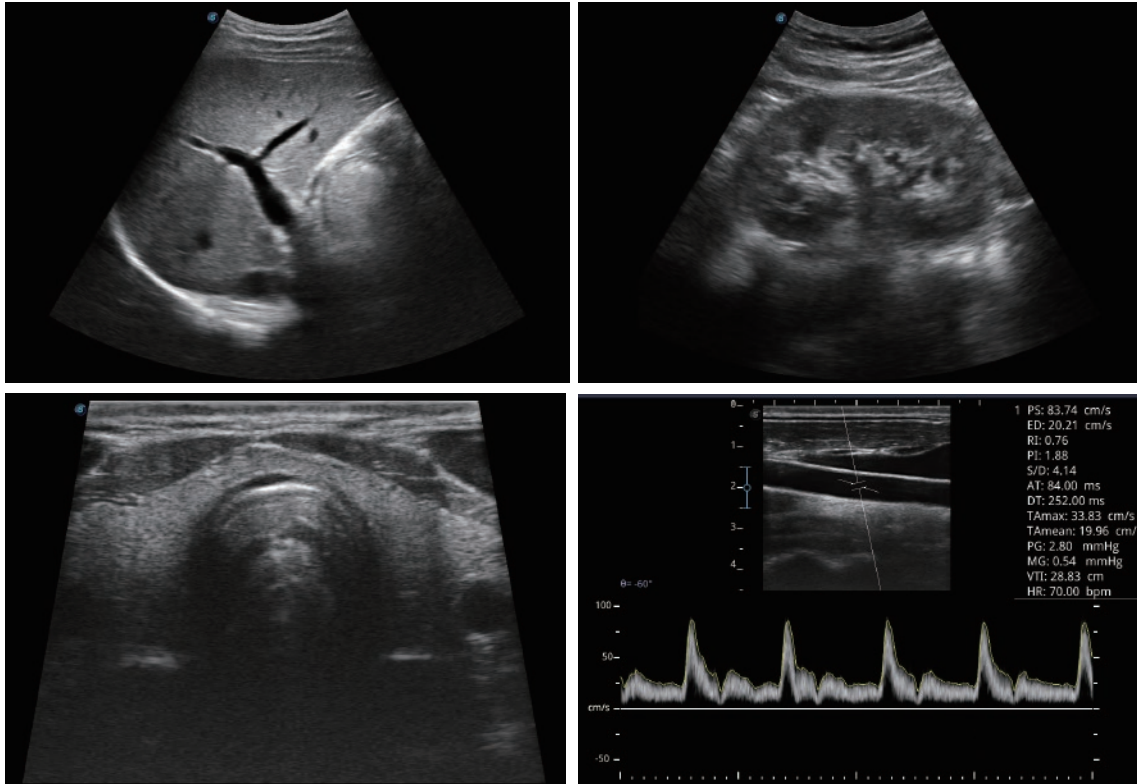
4 } m e d i c TM

SonoScape

E1, as a new hand carried BW ultrasound model, is equipped with complete functions which enhances its competitiveness among entry level ultrasound models. It not only provides satisfying image quality but also brings users a smoother workflow experience.



Suited to Your Needs



Efficient Diagnosis

- μ -Scan, Speckle Reduction & Edge Enhancement
- Spatial Compound Imaging
- PIH - Pure Inversion Harmonic
- Wide Scan - Enlarge Image Area
- PW Doppler
- Chroma - Highlight Image Details
- B Steer for Linear Probe

Ease of Use

- Quick Boot Up
- Auto Brightness Adjustment
- Auto Image Optimization
- Auto IMT
- Auto Trace

Ergonomics Designs

- 3 Transducer Ports
- Light Weight and Compact
- 15.6 inch Anti-flickering HD LED Screen
- Tilting Monitor Angle Adjustment
- Backlit Keyboard and Intelligent Panel
- Long-lasting Battery for 90mins

Equipped Accessories

- Wi-Fi and Bluetooth Available
- DICOM
- 500GB Hard Disk
- Height Adjustable Trolley
- Durable, Carry-on Site Suitcase