

# PRODUKTINFORMATIONEN

Lassen Sie sich 100% kostenfrei  
und herstellerunabhängig von uns beraten:



**09681 796910**



**ANFRAGE@4MEDIC.DE**



**Ihr Kontakt zu uns**

**09681 796910**

info@4medic.de | www.4medic.de  
Gerberstraße 11 · 92670 Windischeschenbach

4 } m e d i c <sup>TM</sup>



PERIMETER  
PERISMART

# PLUG & TOUCH BY RODENSTOCK

Compact design.  
Portable and lightweight.



- High reproducibility
- LED technology
- Easy and fast operation
- Early Glaucoma detection
- Multiple illustration possibilities
- Small, compact and portable
- Reliable fixation control / digital eye tracking

# QUALITY IN DETAIL

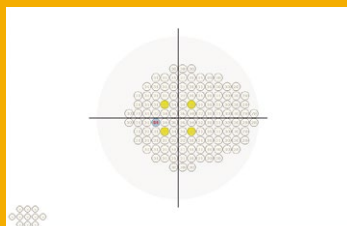


A literally 'easy-to-handle' solution for modern perimetry and screening – the Perismart is a compact, portable and mobile device combined with the advantage of a hemispherical perimeter. Shielded insight, electronic controlled chin rest and last but not least a structured and user optimised application software are only a few out of many other nameable points.

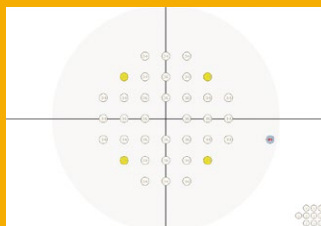
The software operation plus features as customised menu configuration and follow-up pattern appliance make the Perismart an ideal working equipment.

## Test fields

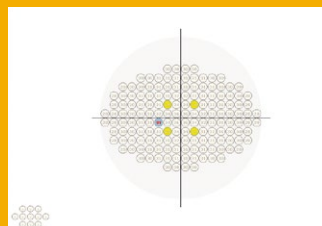
The forthcoming test fields allow an extensive Glaucoma screening besides the standard testing.



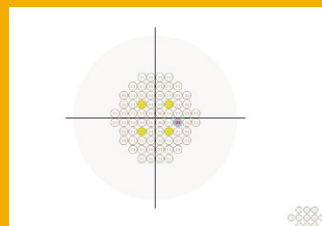
Field „Glaucoma“



Field „Macula“



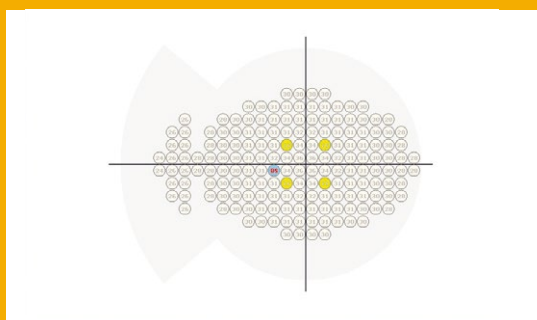
Field „Full“



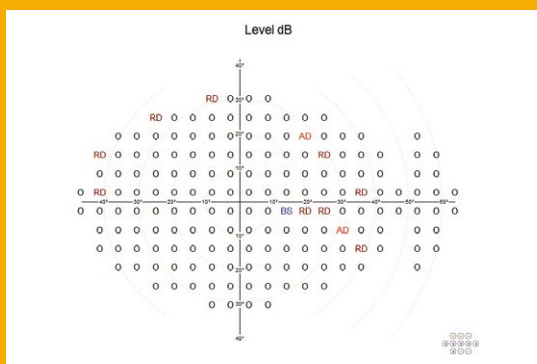
Field „Central“

## Occupational medicine

The Perismart complies with the demands of industrial and occupational medicine (FeV) and shows test fields which correlate according to these requirements.



Field occupational medicine



Result screen occupational medicine

## SPECIFICATIONS

Stimulus bowl type.....	Part hemispherical
Bowl radius.....	300 mm
Eccentricity.....	50° horizontal (+30° mov. fix. point) 30° vertical (+10° mov. fix. point)
Background illumination.....	10 cd/m <sup>2</sup> (32asb) auto level control
Stimulus.....	LED, white, Goldmann III
Stimulus intensity.....	0.01 cd/m <sup>2</sup> (0.03 asb) to 333,33 cd/m <sup>2</sup> (1000 asb) 3dB/1dB
Stimulus.....	LED, white, Goldmann III
Exposure time.....	0.1 to 9.9 sec adjustable
Chin rest adjustment.....	Electrically controlled
Fixation control.....	Heijl Krakau (blind spot method) and CCD camera (digital eye tracking)
User interface.....	Multilingual

### Dimensions & weight

WDH.....	548 x 450 x 382 mm
Weight.....	Approx. 9 kg

### Electrical requirements

Input.....	115 to 230 V
Frequency.....	50/60 Hz
Power consumption.....	Max. 60 W

2015/12 - subject to change without notice

