

PRODUKTINFORMATIONEN

Lassen Sie sich 100% kostenfrei
und herstellerunabhängig von uns beraten:



09681 796910



ANFRAGE@4MEDIC.DE



Ihr Kontakt zu uns

09681 796910

info@4medic.de | www.4medic.de
Gerberstraße 11 · 92670 Windischeschenbach

4 { m e d i c TM



MyLabTMOne

In touch with Physiotherapy

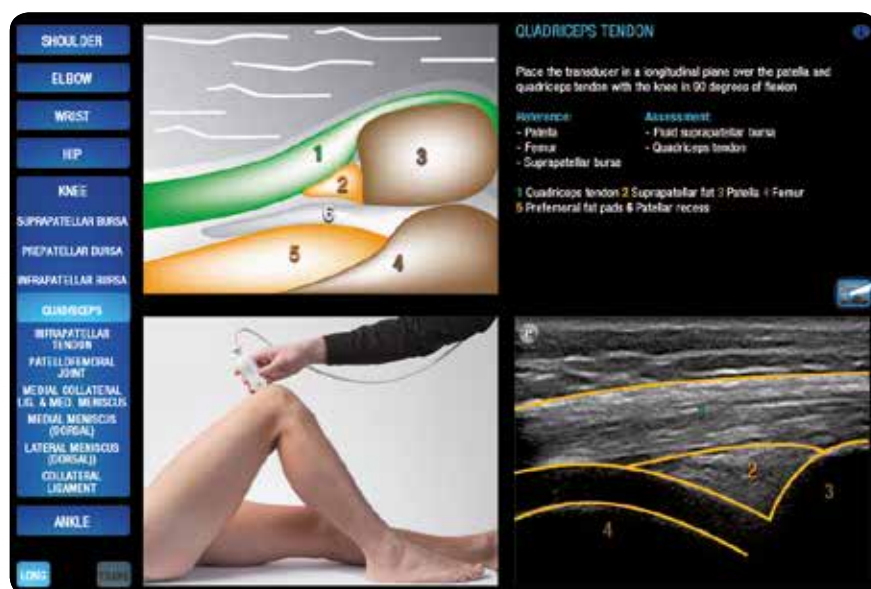
- High-resolution and high-contrast imaging
- Simple and intuitive user interface
- Full touch screen
- High Sensitivity Color Doppler
- MyLibrary user reference guide
- Dedicated accessories and tools
- Wireless connectivity
- Dedicated ergonomics



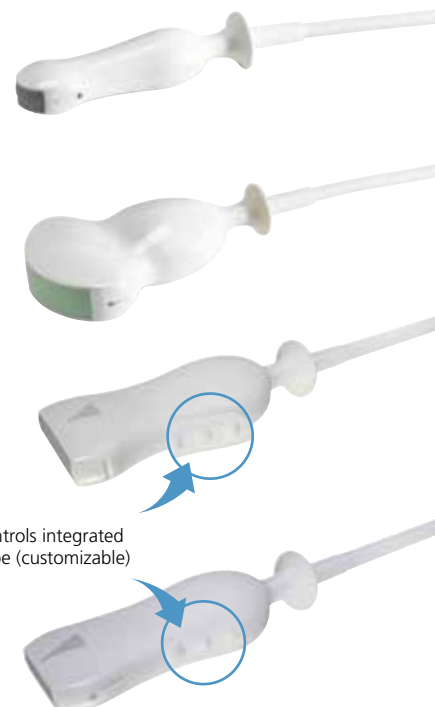
Technologies

- **XView** Image Enhancement
- **MView** Spatial Multi-View Imaging
- **TEI™** Tissue Enhancement Imaging
- High sensitivity Power Doppler

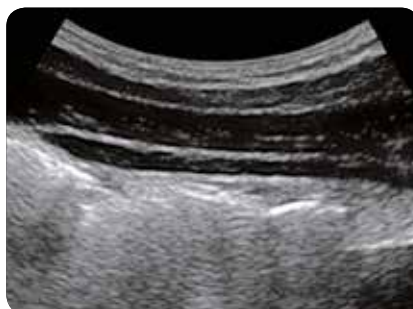
MyLibrary



Made in cooperation with MSc Marc J.H. Schmitz, Physiotherapist, Manual therapist, Ultrasonographer. Kine Care, Roermond and Amsterdam, The Netherlands



Shoulder, Longitudinal Supraspinatus Tendon



Obliques & Transversus Abdominis



Elbow, Longitudinal Coronoid Fossa



0123

Thank you for considering Esaote. We listen to your needs and work every day to provide the most advanced technologies and the most innovative design for you to excel in patient care.

Technology and features are system/configuration dependent. Specifications subject to change without notice. Information might refer to products or modalities not yet approved in all countries. Product images are for illustrative purposes only. For further details, please contact your Esaote sales representative.

ESAOTE S.p.A Via Enrico Melen, 77 16152 Genova, ITALY, Tel. +39 010 6547 1, Fax +39 010 6547 275, info@esaote.com



Please visit us online for more information