

PRODUKTINFORMATIONEN

Lassen Sie sich 100% kostenfrei
und herstellerunabhängig von uns beraten:



09681 796910



ANFRAGE@4MEDIC.DE



Ihr Kontakt zu uns

09681 796910

info@4medic.de | www.4medic.de
Gerberstraße 11 · 92670 Windischeschenbach

4 } m e d i c TM



MyLabTMSeven

Productivity in Real-time

Seven

"Excellence is doing a common thing in an uncommon way"
Albert Einstein

esaote





More in Less



Wide format new generation
16:10 LCD monitor
with articulated arm

High Definition
and large sized
touch-screen

Simple Control Panel
and easy access
to main functions

Illuminated
alphanumeric
keyboard





MyLab[™]Seven

Esaote introduces MyLab[™] Seven, the new ultrasound system designed around Esaote's innovative new Productivity-Oriented Platform (POP).

MyLabSeven is an innovative ultrasound system able to deliver high-class performance and compact size.

The wide 16:10 LCD monitor and large sized high-definition touch-screen reflect the main philosophy of the system: Productivity in Real-time, means better diagnosis in less time.

MyLabSeven also includes built-in wireless access to provide easy and fast data transfer. This leads to an improved user comfort and clinical outcome as well as department throughput and efficiency.

MyLabSeven is the right choice to drive healthcare innovation.





Ergonomics

- Wide image size
- Articulated monitor arm
- Easy rotation and height adjustment
- Sliding alphanumeric keyboard





Simplicity

MyLab[™]Seven



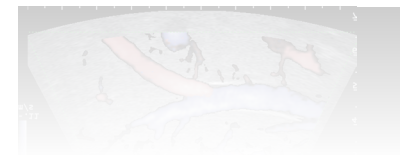
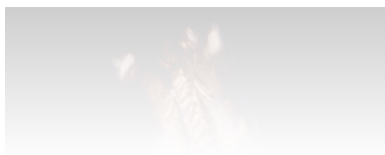
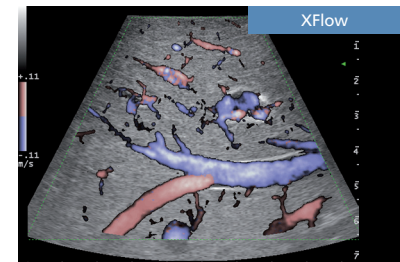
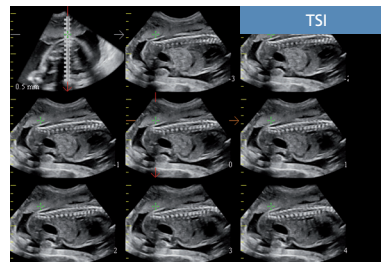
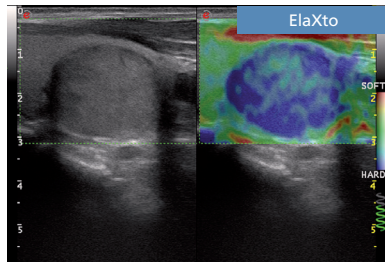
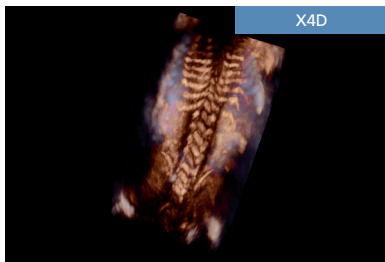
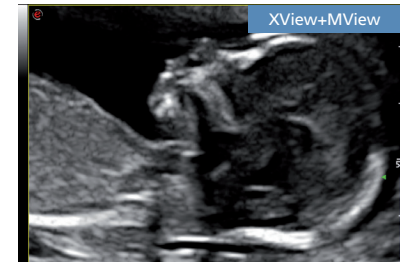
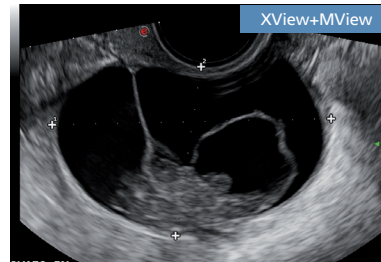
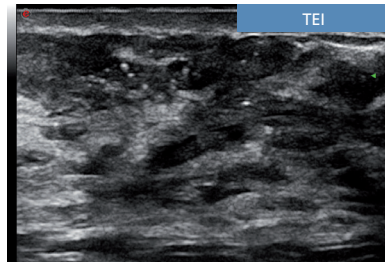
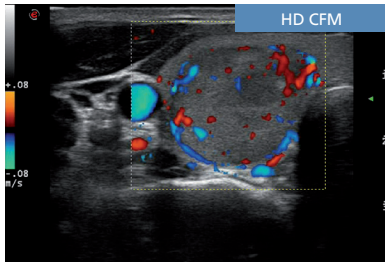
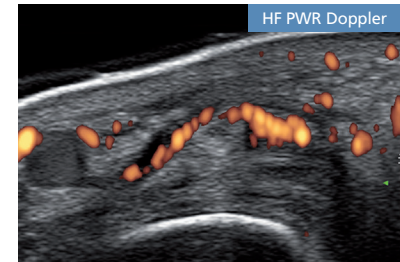
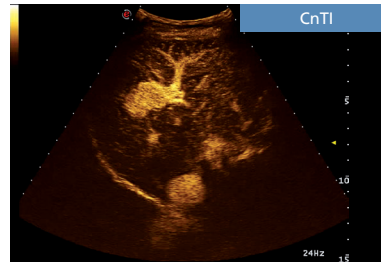
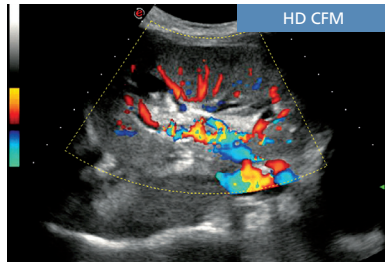
- Designed for productivity
- 4 probe connectors
- Wide range of transducers (2D, 3D)
- Compact footprint and easy mobility
- Stand-by battery



esaote

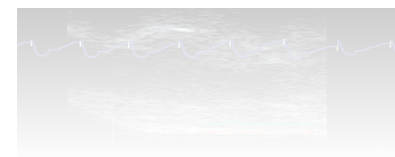
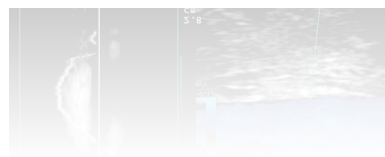
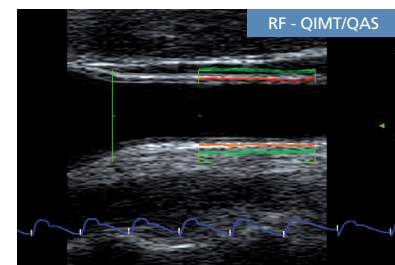
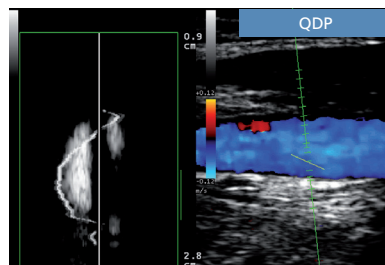
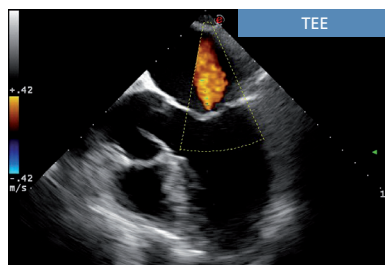
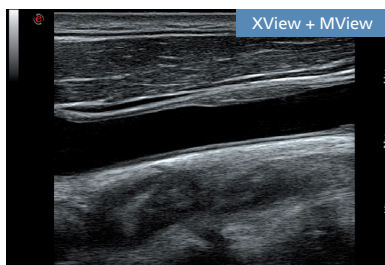
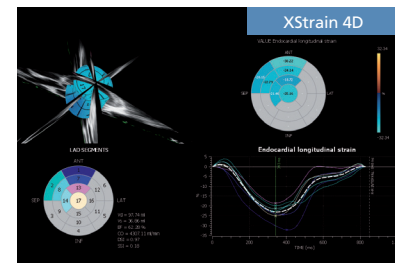
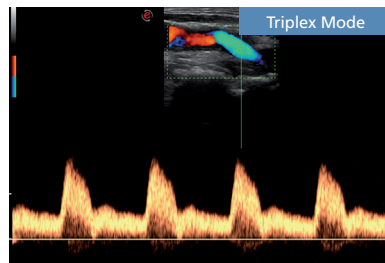
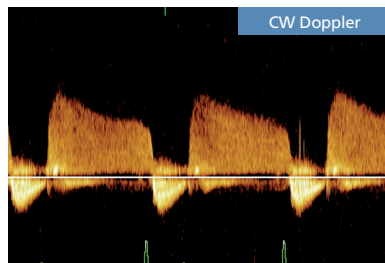
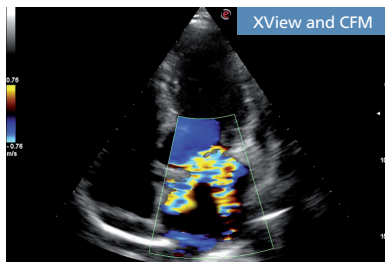
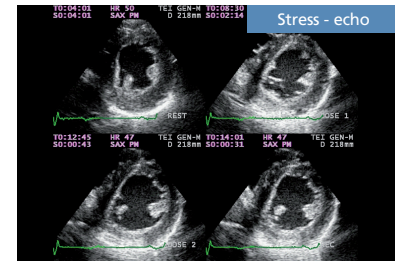
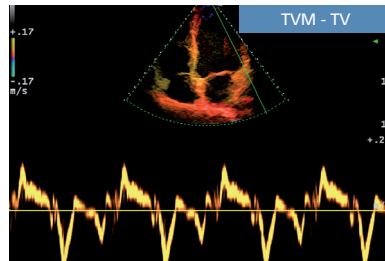
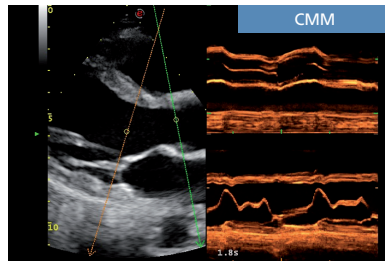
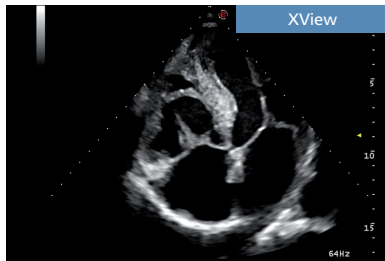


Stunning Images within reach





improve diagnostic confidence





Your eTouch



A standard ultrasound system becomes a personal application-specific diagnostic tool.

Customized settings and multiple functions can be organized according to clinical practice and preferences and then easily recalled by just pressing a button.



Unparalleled throughput

MyLabTMSeven

The intelligent software and the large sized touch-screen allow unique features to be delivered with MyLabSeven. The Productivity-Oriented Platform is the core of the architecture: easy access, personalized settings and functions, standardized clinical protocols and immediate settings.

Custom setup

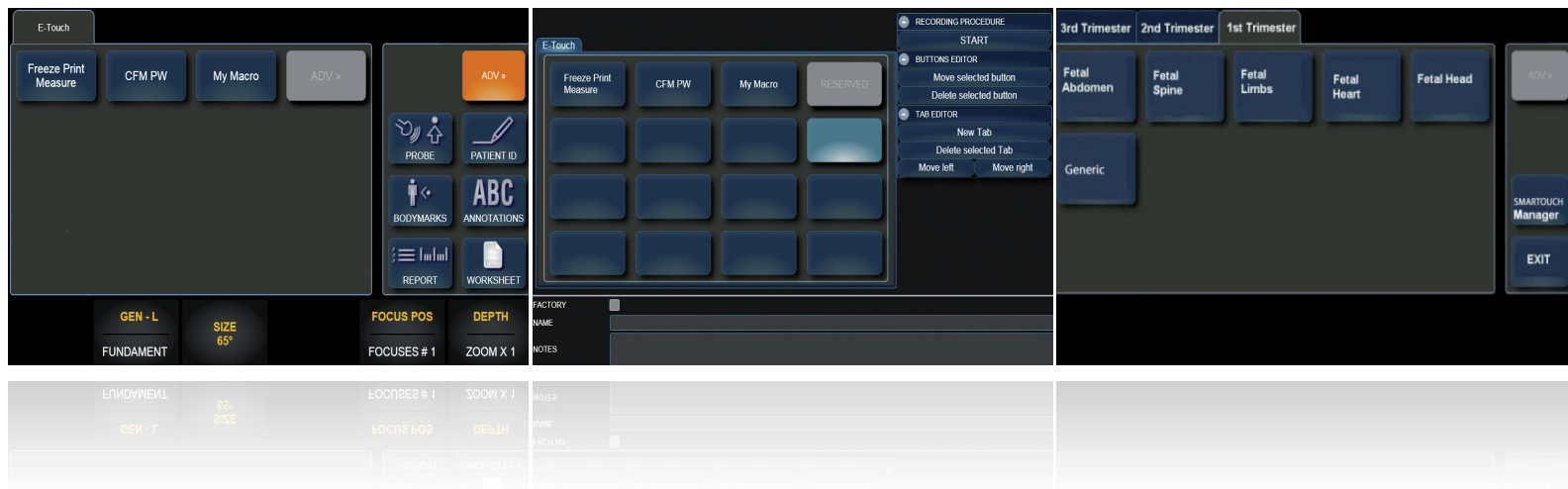
By pressing the eTouch button, the user can display the controls and functions that he really needs in clinical practice: improved comfort and reduced examination time.

MyMacro

eTouch dedicated session allows the user to record different macros. Based on any single user's needs and preferences, multiple functions can be included with just one touch: less keystrokes and faster diagnosis.

SmarTouch

Wide ranging image settings, user preferences and clinical targets, normally require time and attention. Smart-touch delivers dedicated settings for any anatomical district. Optimal images are displayed with just one touch.





iQProbes

- Active Matrix Composite Material
- Multiple Adaptive Layers
- Bi-Con Geometric Lens
- Heating Efficiency Control



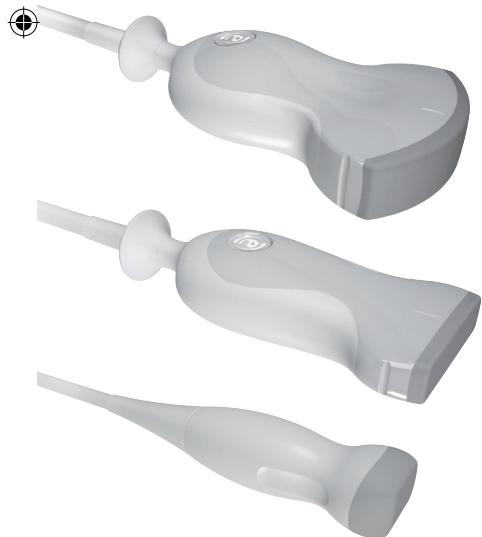
reddot design award
honourable mention 2008



appleprobe

MyLabSeven offers a wide range of iQ Probes. In addition to convex, linear and phased array, several special probes (such as endocavity, trans-esophageal, intraoperative, volumetric,...) can be connected.

MyLabSeven, thanks to four multi-size connectors, offers the compatibility with different type of probes. Examination can be comfortably performed, with the right tool and without any waste of time.





Wireless Ultrasound

MyLabTMSeven

- Extended export capability to PC (Windows[®], Mac[®]) and mobile devices (tablets, smart-phones, etc ...)
- Easy networking, standard and wireless
- DICOM and IHE compliance

MyLabTMDesk³



The new app to visualize images and videos on mobile devices:



Mylab App





www.esaote.com

MyLabSeven

Productivity in Real-time

"Excellence is doing a common thing in an uncommon way"
Albert Einstein

169 0040 00 (MA Rev. 04)



Windows® is a registered trademark of Microsoft Corporation
Mac® is a registered trademark of Apple Inc.



0051

Esaote S.p.A.

International Activities: Via di Caciolle, 15 50127 Florence, Italy, Tel. +39 055 4229 1, Fax +39 055 4229 208, international.sales@esaote.com
Domestic Activities: Via A. Siffredi, 58 16153 Genoa, Italy, Tel. +39 010 6547 1, Fax +39 010 6547 275, info@esaote.com

FRANCE

Esaote France S.A.R.L.
ZA du Bel Air
10, rue de Témara, 78105 Saint Germain en Laye
Tel. +33 1 8204 8900, Fax +33 1 3061 7210
info@esaote.fr

GERMANY

Esaote Biomedica Deutschland GmbH
Max-Planck-Straße 27a
50858 Köln
Tel. +49 2234 688 5600, Fax +49 2234 967 9628
info@esaote.de

SPAIN

Esaote España S.A.
C/. Pont Reixat, 5
08960 Sant Just Desvern, Barcelona
Tel. +34 93 473 2090, Fax +34 93 473 2042
info@esaote.es

THE NETHERLANDS AND BELGIUM

Esaote Benelux B.V.
Philipsweg 1
6227 AJ Maastricht
Tel. +31 43 3824650, Fax +31 43 3824651
benelux@esaote.nl

UK

Esaote UK
14, Cambridge Science Park
Milton Road, Cambridge, CB4 0FQ
Tel. + 44 1223 424499, Fax + 44 709 288 0231
infoUK@esaote.com

NORTH AMERICA

Esaote North America
8000 Castleway Drive,
Indianapolis, IN 46250
Tel. +1 317 813 6000, Fax +1 317 813 6600
inquire@esaoteusa.com

BRASIL

Brasilian Direct Office
Rua Tomas Carvalhal, 711
04006-001 São Paulo SP
Tel. +55 11 2589 0533 Fax +55 11 2589 0527
leonardo.pili@esaote.com.br

ARGENTINA

Esaote Latinoamérica S.A.
San Martín 551, Cuerpo 'C', Piso 8, (C1004AAK)
Buenos Aires
Tel. +54 11 4326 1832, Fax: +54 11 4328 1245
info@esaote.com.ar

INDIA

Esaote Asia Pacific Diagnostic Private Limited
DLF IT Park, A - 44 & 45, Tower- C, Ground Floor,
Sector- 62, Noida, Uttar Pradesh, India
Pin Code: 201 301
Tel. +91 120 4732444, Fax +91 120 4750148
info@esaote.in

HONG KONG AND FAR EAST

Esaote China Ltd
18/F, 135 Bonham Strand Trade Centre,
135 Bonham Strand, Sheung Wan, Hong Kong
Tel. +852 2545 8386, Fax +852 2543 3068
esaote@esaotechina.co

CHINA

Esaote Shenzhen Medical Equipment
Room 2608, Tower B
Beijing Global Trade Center
36 North Third Ring Road East,
Dongcheng District, 100013, Beijing
Tel. +86 010 58257766, Fax +86 010 52257760

RUSSIAN FEDERATION AND CIS

Esaote S.p.A.
18 Leningradsky prospekt
Off. 5 and 6, Moscow 125040
Tel. +7 495 232 0205, Fax +7 495 232 1833
esaotemoscow@yandex.ru

Specifications subject to change without notice.

Features, functions and accessories included in this brochure might be not yet released or approved in all the countries.

X4D, Elaxto, QAS, QIMT, QDP and XStrain 4D are not yet for sales in the USA.

The use of contrast agents in the USA is limited by FDA to left ventricle opacification and visualization of the left ventricular endocardial border.

